



East Los Angeles Community Information Session

1/29/2020
Saybrook Park

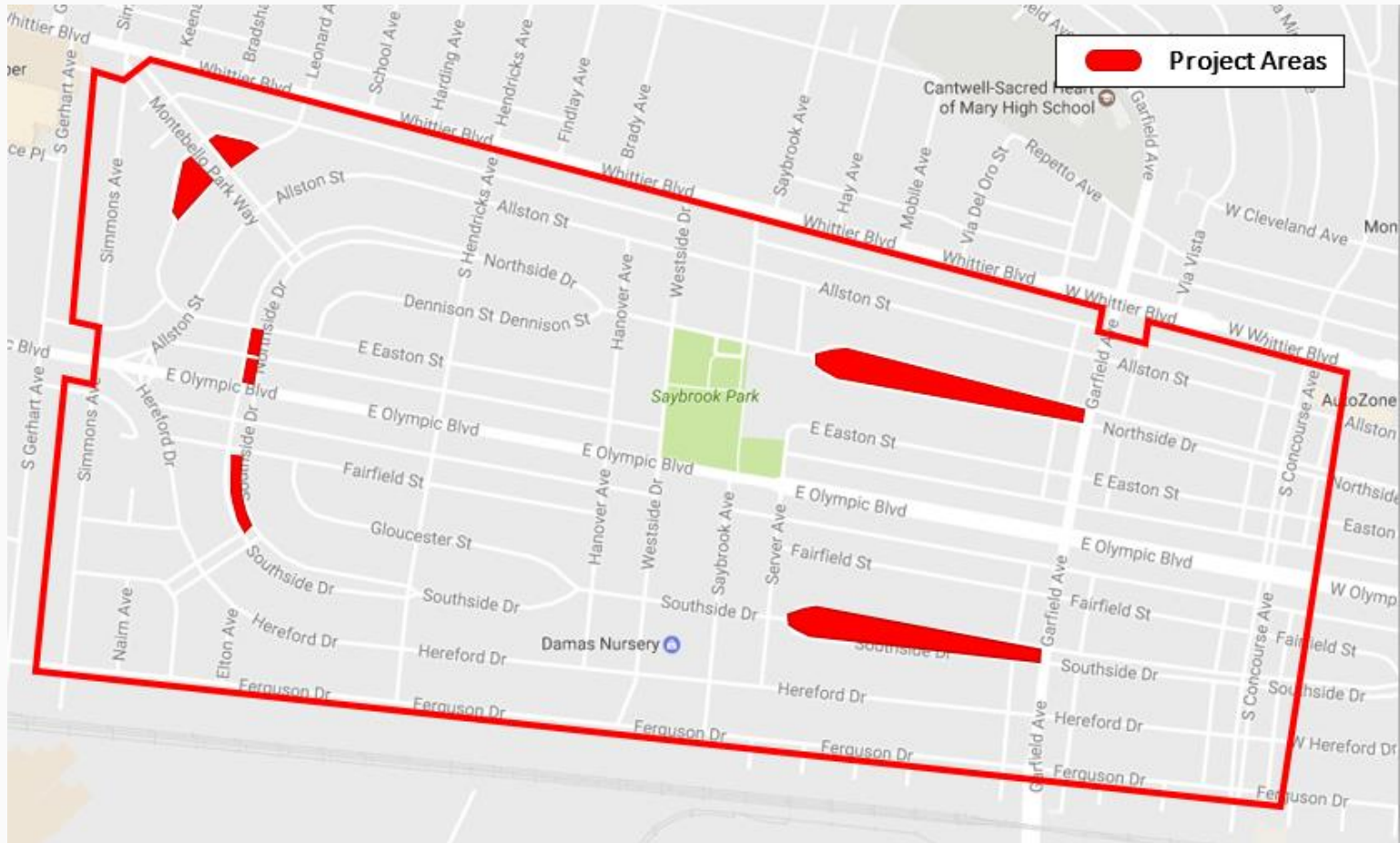
East Los Angeles Community Information Session

Overview

- Summary and Updates on the East Los Angeles Sustainable Median Stormwater Capture Project
- Presentation of available services from Public Works



East LA Sustainable Median Stormwater Capture Project



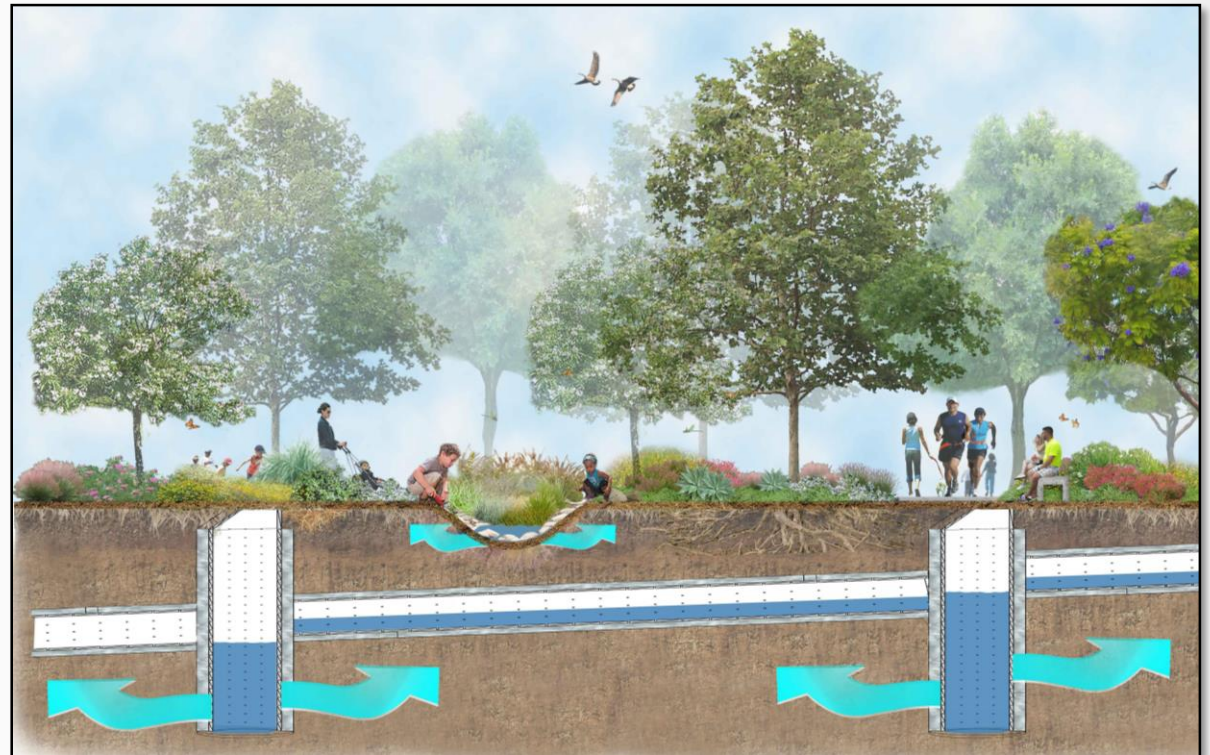
East LA Sustainable Median Stormwater Capture Project



Existing Medians

East LA Sustainable Median Stormwater Capture Project

- Project will divert urban and stormwater runoff into drywells within existing roadway medians
- Above-ground improvements
 - Drought tolerant landscaping
 - Picnic Tables/Benches
 - Walking Paths
 - Exercise Equipment
 - Educational Signage



East LA Sustainable Median Stormwater Capture Project

Budget

- Total Estimated Project Cost: \$36M
- Project Partners:
 - Los Angeles County
 - Los Angeles County Flood Control District
 - Monterey Park
 - Montebello
- Other Funding Sources: \$4.5M
 - Prop 1 Stormwater - \$2M
 - CA Urban Greening Grant - \$2.5M



East LA Sustainable Median Stormwater Capture Project

Schedule

- Begin Construction – Summer 2020
- Complete Construction – Fall 2021



East Los Angeles Community Information Session



- One of 37 departments in the County of Los Angeles
- **Directed by the Board of Supervisors** to provide service to the unincorporated communities
- Headquarters located in City of Alhambra

Los Angeles County Public Works Core Service Areas



WATER RESOURCES

"We provide sustainable water supplies and healthy watersheds while reducing flood risk for our communities."



TRANSPORTATION

"We provide safe, clean, efficient transportation choices and rights-of-way to enhance mobility and quality of life."



ENVIRONMENTAL SERVICES

"We lead, inspire, and support our communities toward a healthy, waste-free future."



PUBLIC BUILDINGS

"We design and deliver high performing public facilities for people and services to thrive."



DEVELOPMENT SERVICES

"We help people build dreams and ensure safe and healthy homes and communities."



EMERGENCY MANAGEMENT

"We maintain a highly trained and equipped workforce to respond to and recover from daily incidents, local emergencies, and major disasters."

Environmental Services



Commercial Trash Collection



Residential Trash Collection



Tire Recycling



Bulky Item Pick Up



HHW Program

Environmental Services

- **Bulky Items**

To schedule a bulky item pick-up, call Consolidated Disposal Service at **(800) 299-4898**

Need bulky items picked up?



Contact your waste hauler to schedule a free pick up!



- **Illegal Dumping**

To report illegal dumping, call the Illegal Dumping Hotline at **888-8DUMPING** (888-838-6746)



Environmental Services



School Garden Program



Smart Gardening Program
Workshop



Recycling

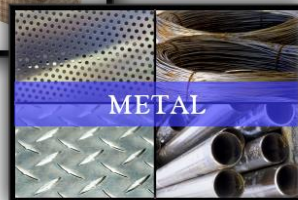


TEXTILES

DURABLE GOODS



WOOD



METAL



Everywhere You Go
BYO
Bring Your Own

www.CleanLA.com



Building and Safety Services



Verification of safe building design and construction through the enforcement of building codes and standards

Including **plan checking**, **permit issuance**, and **inspection services**.

Road Maintenance Services

- **PAVEMENT MAINTENANCE**
 - Pothole Patching
 - Dig-outs
 - Pavement Preservation
- **MINOR CONCRETE REPAIR**
 - Sidewalks
 - Driveway Aprons
 - Curb & Gutter
 - Curb Ramps
- **PARKWAY TREES**
 - Trimming
 - Planting
 - Replacement
- **STREET SWEEPING**
- **EMERGENCY RESPONSE**
- **LANDSCAPE MAINTENANCE**



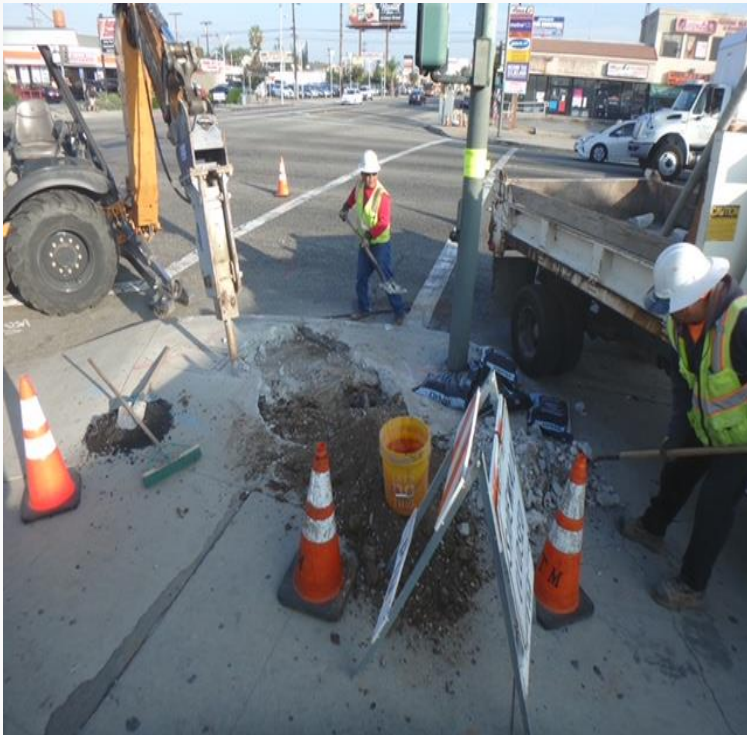
Transit Services



- Shuttle Bus
- Dial-a-Ride
- Recreational transit

Traffic Safety and Mobility

Traffic control and/or traffic calming measures



Other Programs

Graffiti Abatement



Stray shopping cars

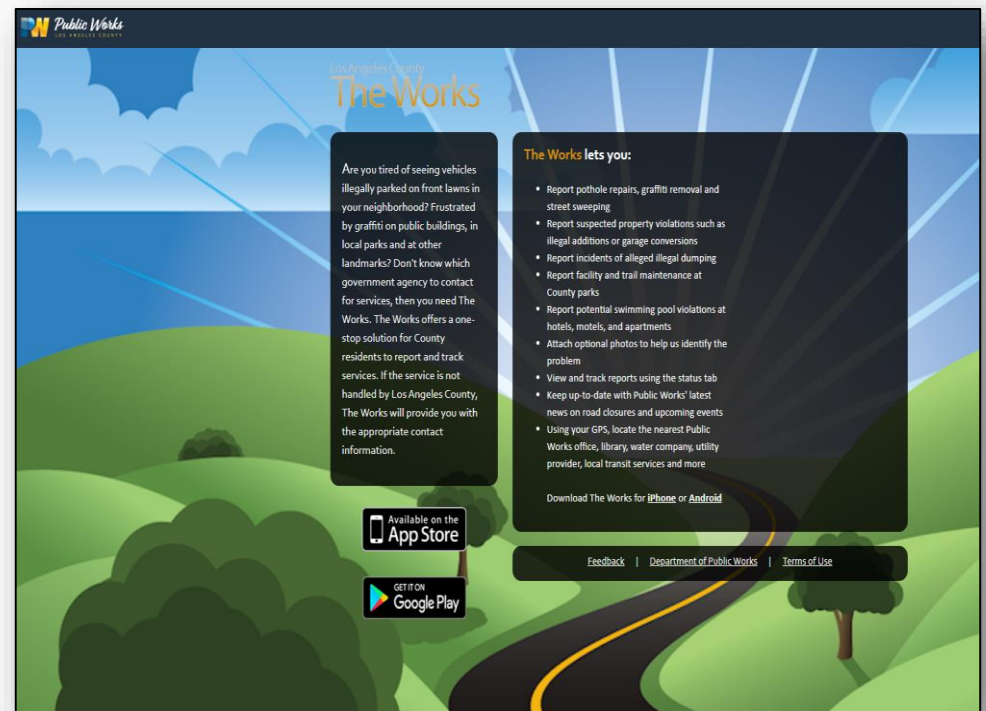


East Los Angeles Community Information Session

The Works App

Contact Information:

- The Works App
- Public Works Website: pw.lacounty.gov
- By phone: (626) 458-5100



East Los Angeles Community Information Session

County of Los Angeles – Public Works

Joseph Venzon, P.E.

jvenzon@dpw.lacounty.gov

(626) 300-2630

Bella A. Hernandez

bhernan@dpw.lacounty.gov

(626) 300-2621